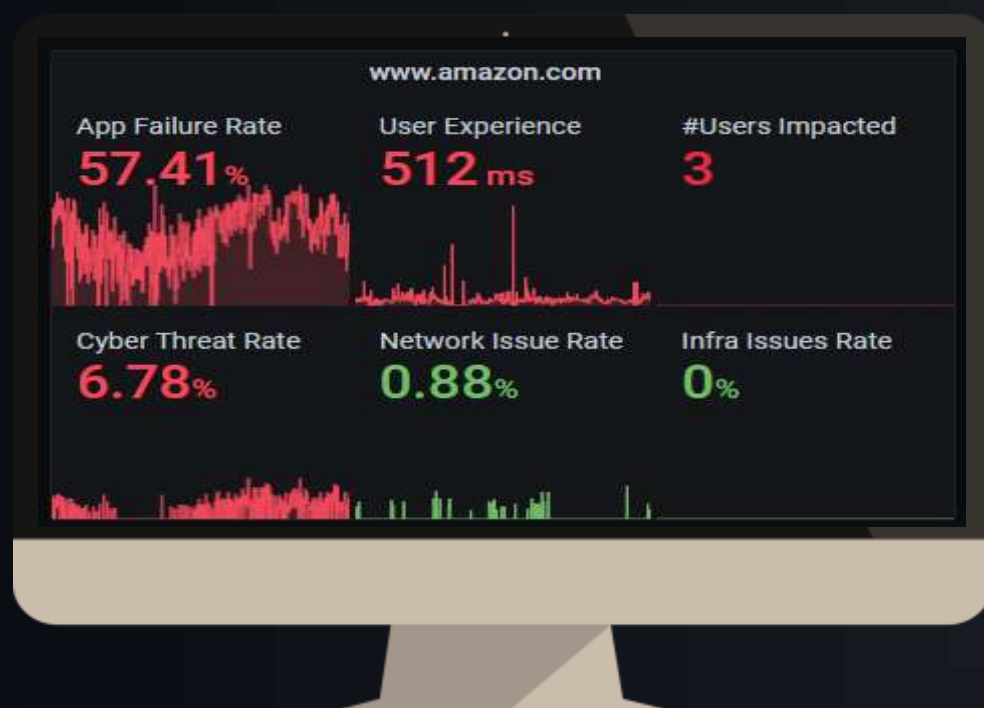
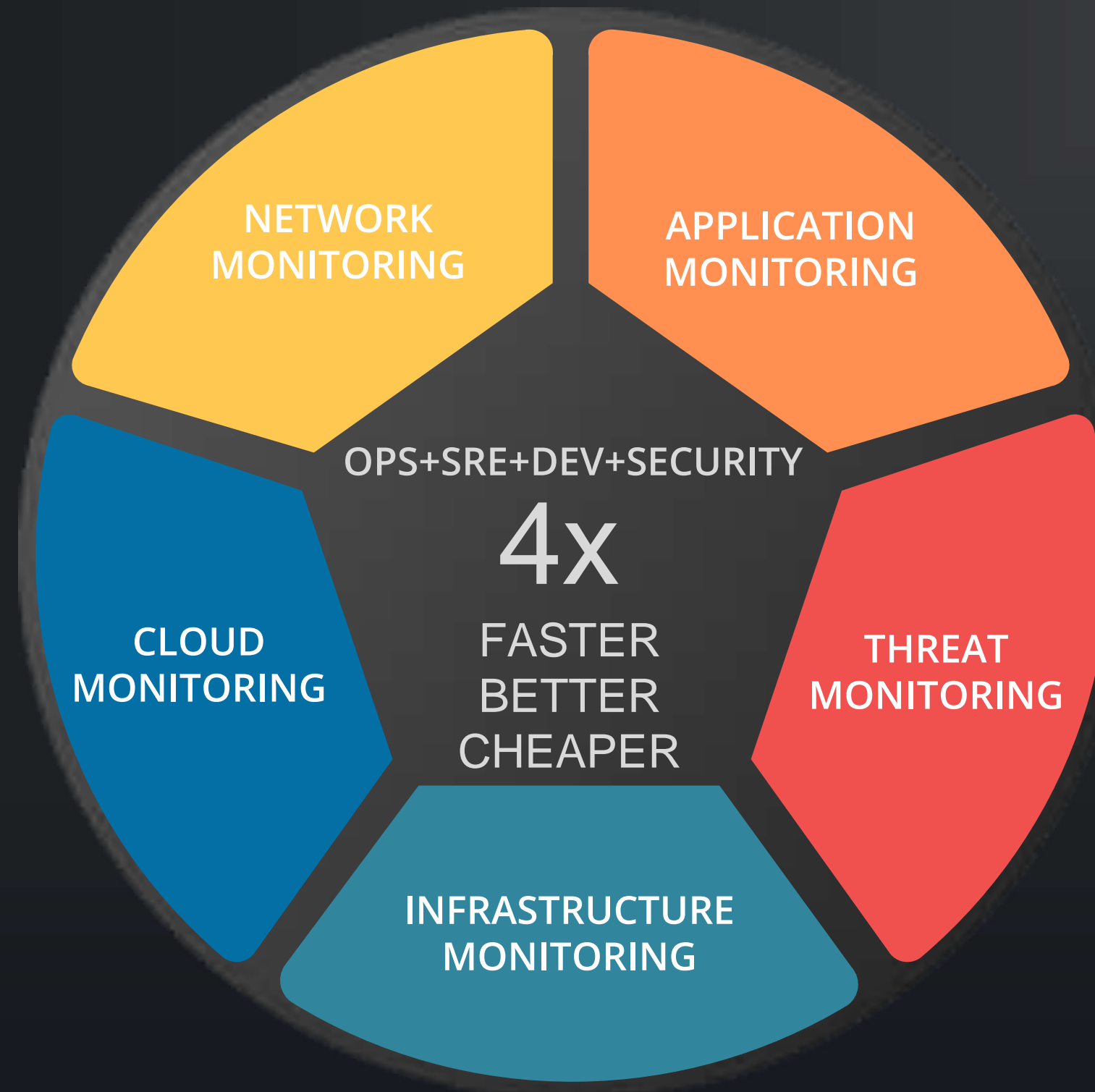




Enterprise360



Unified IT Observability Software Solution



ThoughtData Advantage

Agentless Monitoring | Deploy Anywhere | Integrations to ITSM/SIEM

Deployment

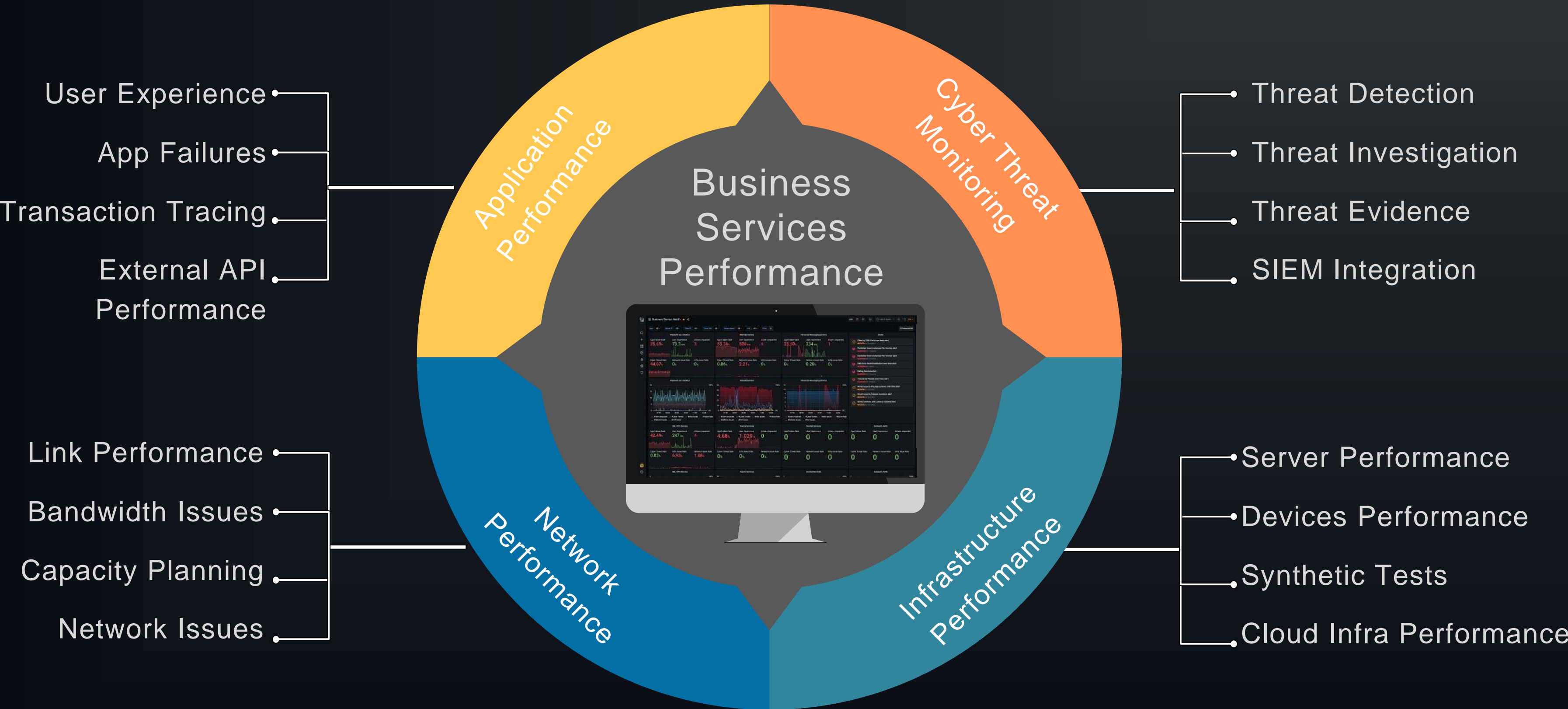
Customer Hosted | ThoughtData Hosted

Managed Service

Consulting | Implementation | Services

# ENTERPRISE360

Unified Observability Platform – Use Cases Coverage





# ThoughtData

## ENTERPRISE360

### Unified IT Observability Coverage

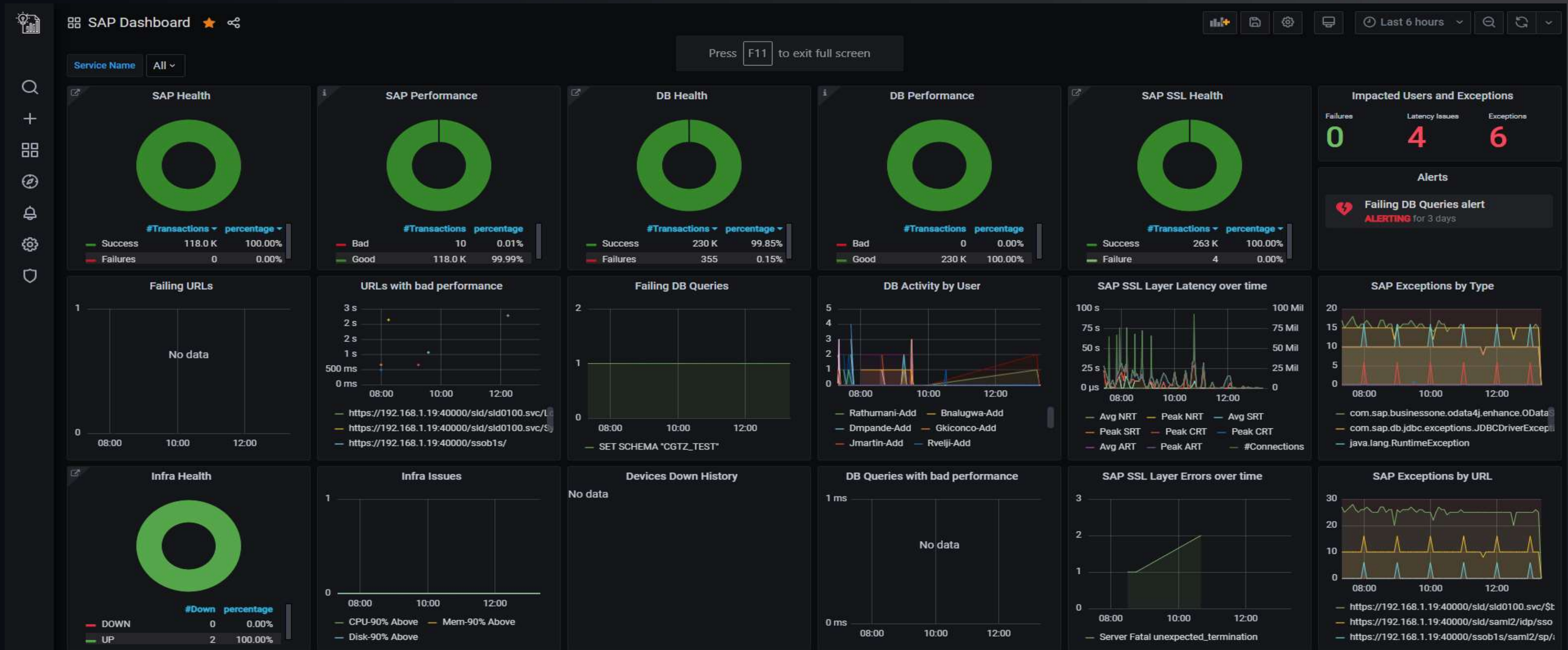
| Network Monitoring                                  | Application Monitoring   | Infrastructure Monitoring                            | Threat Monitoring                                       | Cloud Monitoring                                     | Integrations                                       |
|---|--|--|---|--|--|
| Packet based Layer 2-7 Traffic Monitoring           | APM agent based monitoring for Java, NodeJS, Golang, Python etc Apps | Server Monitoring using remote SSH/WMI/SNMP or Agent | MITRE ATT&CK framework threat detection & investigation | Public cloud infra monitoring (AWS, Azure, GCP etc)  | ITSM Integration (Servicenow, Jira etc)            |
| SNMP based device monitoring (Any device/MIB)       | Database Monitoring (ES, MySQL, Mongo, Maria DB etc)                 | Disk/Storage Monitoring                              | DDoS threat detection & investigation                   | Cloud DB Services Monitoring(ES, MySQL, MongoDB etc) | SIEM Integrations                                  |
| App-specific monitors (HTTP/s, DNS etc)             | Real User Monitoring(RUM) Rest API Monitoring                        | Virtual Infra Monitoring (Vmware ESXI)               | Reputation threats using Stix/Taxii                     | Serverless Function Monitoring(Beta)                 | BI Tools Integrations(Power BI, Grafana etc)       |
| Device specialized NPM monitors (Cisco, Vmware etc) | Docker Monitoring SAP Monitoring Thread Dump Analysis                | Synthetic Test Monitoring (Any HTTP/s URL)           | Network Anomalies                                       | AWS Cloud Watch, Azure Monitor GCP Monitor           | Automation Integrations                            |
| VPN Monitoring Network Maps                         | Custom app specific log monitoring JVM/JMX Monitoring                | Network Devices Monitoring Routers/Switches etc      | Certificate Threats & Network Risks                     | Cloud API Monitoring                                 | Alert/Report Integrations(Email, Teams, Slack etc) |

**ENTERPRISE360**

**Business Service Health & Performance  
Monitoring Dashboard**



# ENTERPRISE360 – Business Service Health Dashboard



## Use Cases

Real time and historical health and performance of your business critical service in one single dashboard

Get visibility into App, Database, Network, Infra Issues in one dashboard

Customize your dashboard according to your team needs – Sample illustration example for SAP business service

**ENTERPRISE360**

**Application Performance Monitoring (APM)**

**Workflows**



# ThoughtData

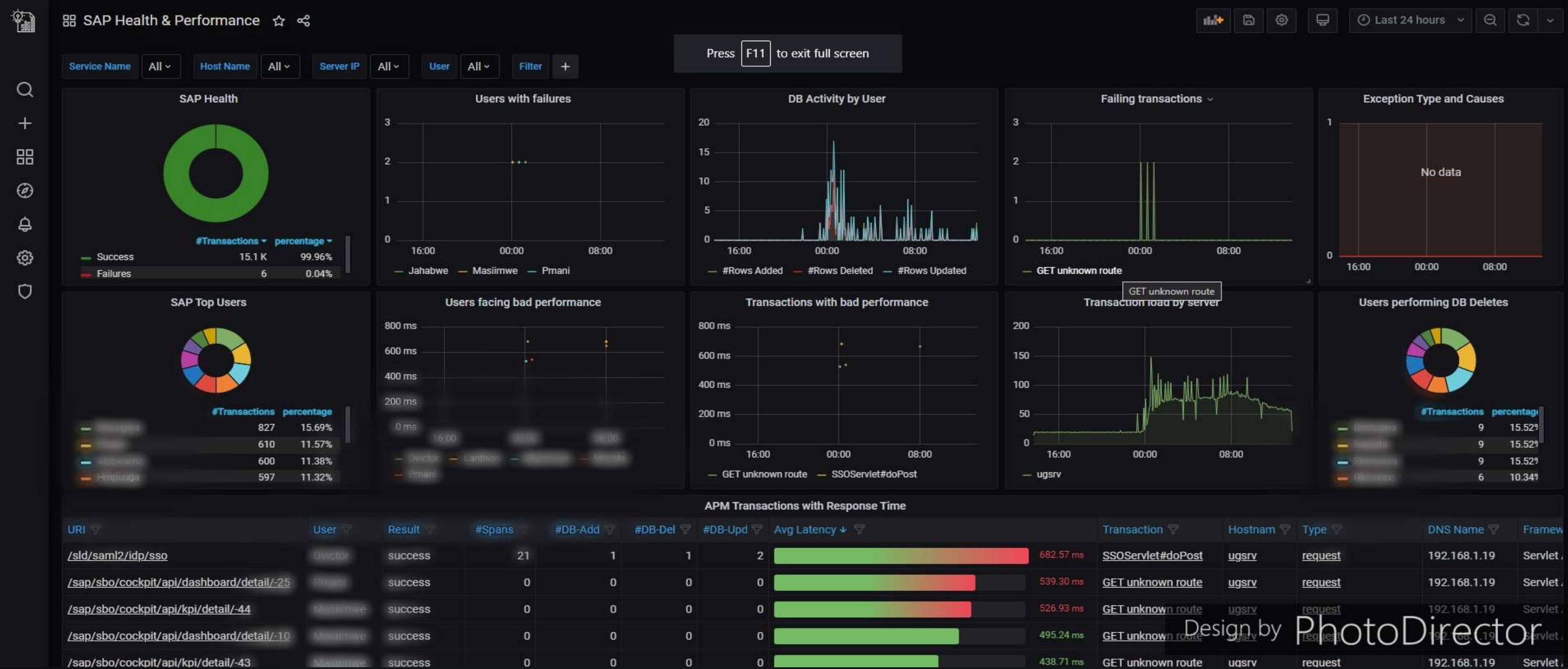
## ENTERPRISE360

### APM Coverage

| SI No | Category               | Requirement/Use Case   |
|-------|------------------------|--|
| 1     | APM                    | Capability to have a custom dashboard to monitor health and performance of a entire business service with real time visibility into health and performance of each application, dependent application, database and infrastructure associated with the application |
| 2     | APM                    | Capability to visualize, track and investigate each application transaction per web URL with key performance indicators like errors, latency   |
| 3     | APM                    | Capability to visualize, track and investigate each application sub transactions per web URL - all the way upto middleware to database layers with key performance indicators like errors and latency  |
| 4     | APM                    | Capability to monitor health and performance of applications built on Java, Node JS, Golang, Python etc based application frameworks   |
| 5     | APM                    | Capability to monitor health and performance web applications like tomcat, apache, nginx etc   |
| 6     | APM                    | Capability to monitor non standard applications running in the network   |
| 7     | APM                    | Capability to monitor application specific logs derived from application servers   |
| 8     | APM                    | Capability to monitor all external API and dependent application calls and track their performance end to end  |
| 9     | APM                    | Capability to monitor JVM/JMX metrics to ascertain the performance, resource constraints and issues  |
| 10    | RUM                    | Capability to monitor user experience of web based application using real user monitoring technology(RUM)  |
| 11    | API Monitoring         | Capability to monitor any rest API using http/https URL  |
| 12    | DB Monitoring          | Capability to monitor databases like SQL, MYSQL, MariaDB, MongoDB, Elasticsearch, HANA DB etc with detailed KPIs   |
| 13    | Thread Dump Monitoring | Capability to monitor thread dump on application server with visibility into deadlock and other conditions per process   |
| 14    | Stack Trace Monitoring | Capability to remotely extract stack trace for application processes   |
| 15    | SAP Monitoring         | Capability to monitor SAP business application end to end with customized monitoring   |
| 16    | Synthetic Tests        | Capability to monitor Synthetic tests for any web based application with customizable HTTP/HTTPs URLs  |
| 13    | DB Monitoring          | Capability to monitor each database query and query performance  |
| 16    | Alerts and Reports     | Alert on any metric on any dimension on any chart, Get Alerts on email, slack, teams etc, auto generate tickets using service now etc<br>Setup and generate adhoc and scheduled reports on any dashboard. Get CSV report with data to play around in excel format  |



# ENTERPRISE360 – APM Transactions Summary

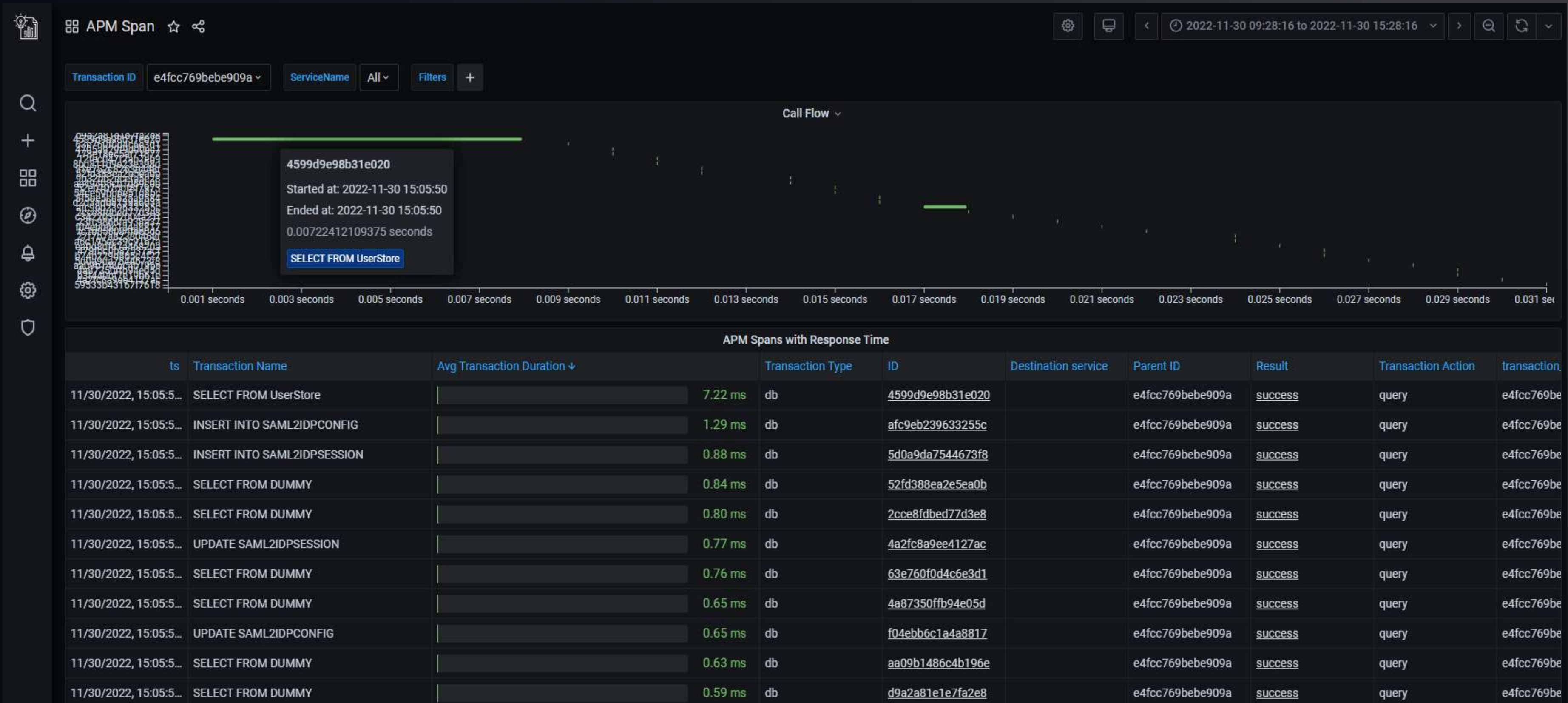


## Use Cases

- Per URL transaction tracing
- Drilldown to see sub transactions and their individual performance
- Drilldown to see all database queries and their performance
- Drilldown to see all external API transactions and their performance



# ENTERPRISE360 – App Transaction Tracing

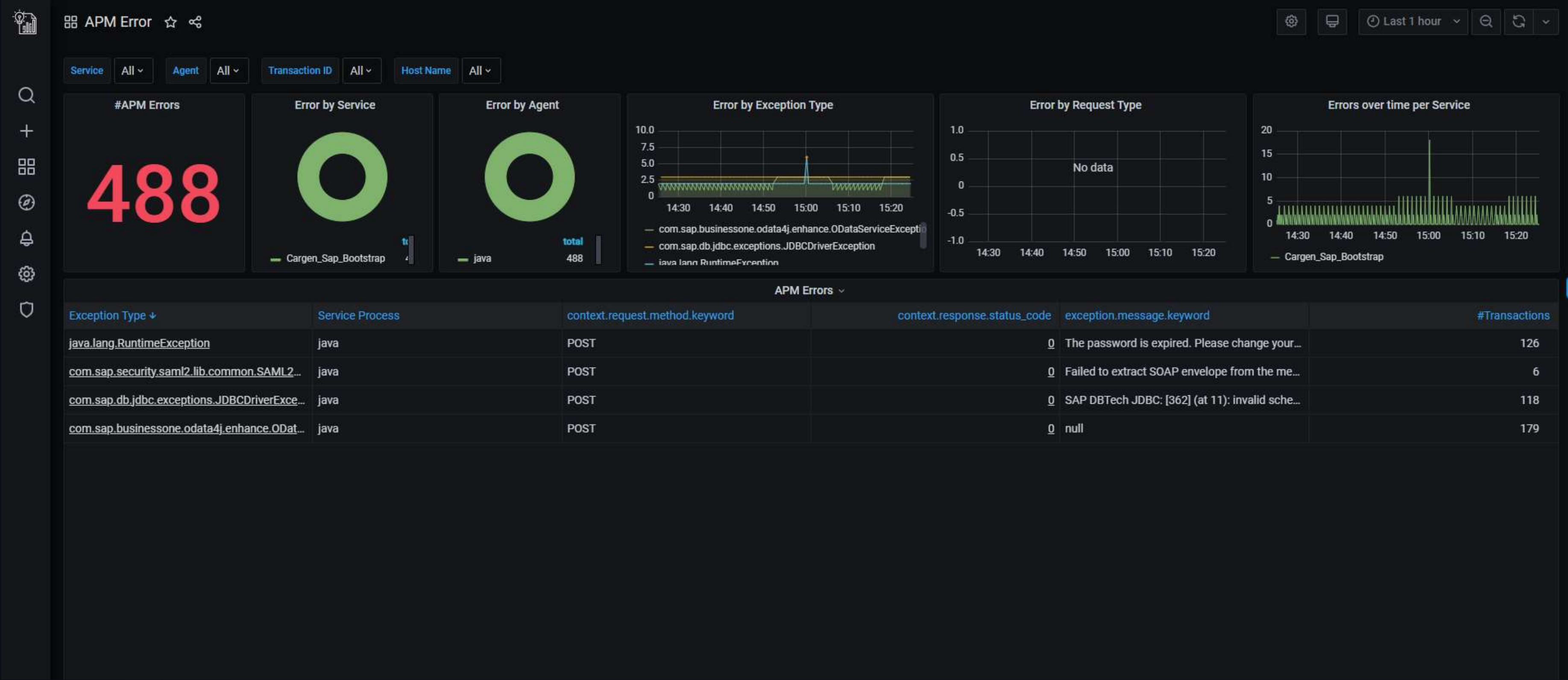


## Use Cases

## Trace and investigate each app transaction, get visibility into sub transactions and call flow diagram

Get visibility into all database queries, middleware transactions and also external API calls

# ENTERPRISE360 – App Exceptions Monitor

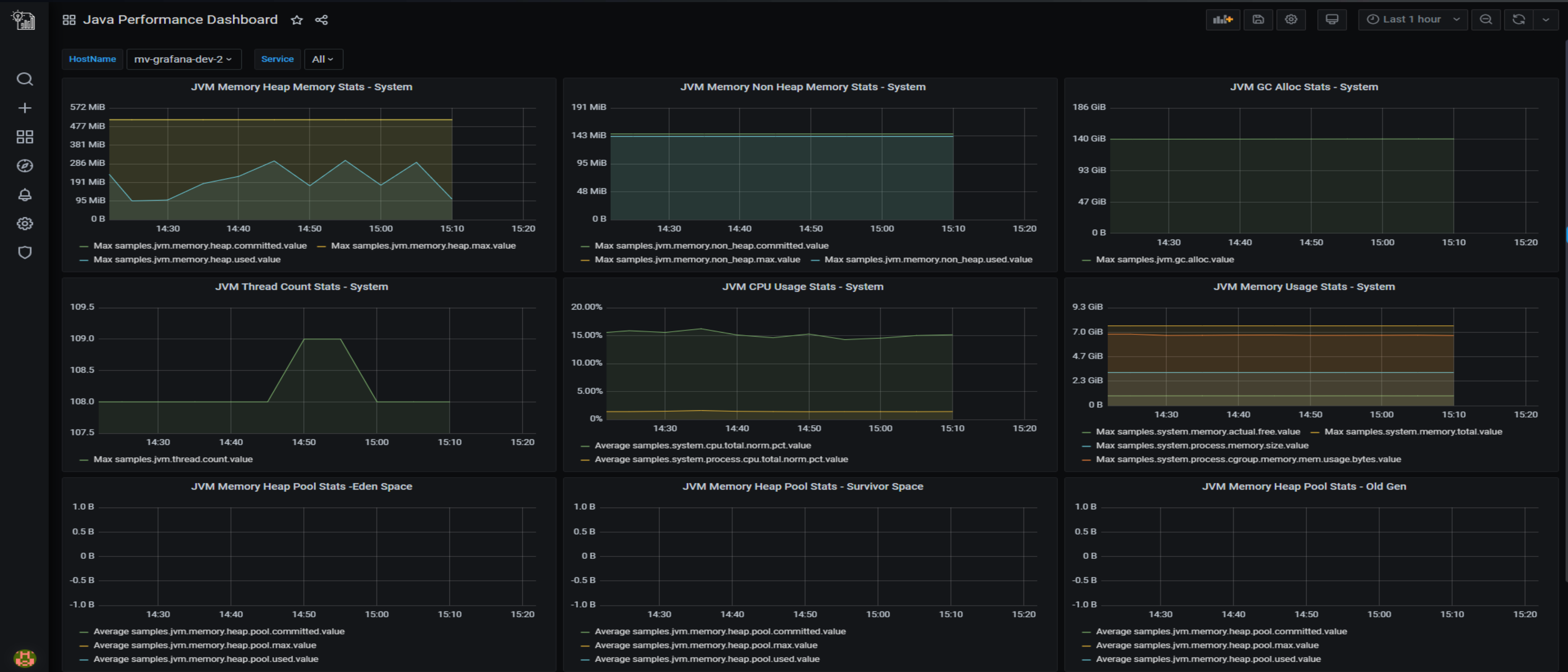


## Use Cases

- Detect and investigate each exception on your application
- Get visibility to stack trace and also threat dump analysis



# ENTERPRISE360 – Java Performance Dashboard



## Use Cases

Get visibility performance of JVM/JMX on your Java processes

Investigate performance bottlenecks in JVM which can impact your app performance

**ENTERPRISE360**

**Infrastructure Performance Monitoring(IPM)**

**Workflows**





# ThoughtData

## ENTERPRISE360

### IPM Coverage

| SI No | Category                         | Requirement/Use Case  |
|-------|----------------------------------|---|
| 1     | Infrastructure Monitoring        | Holistic view of entire IT infrastructure in one single dashboard with status of devices and devices running into infrastructure problems along with alerts   |
| 2     | Infrastructure Monitoring        | Monitor all critical servers/devices in the network remotely without needing to install any software agents on the servers or devices   |
| 3     | Infrastructure Monitoring        | Monitor all critical servers and devices using agents where remote monitoring is not feasible or available  |
| 4     | Infrastructure Monitoring        | All credentials used for monitoring infrastructure are TLS encrypted and stored in the solution – no risk of breach   |
| 5     | Infrastructure Monitoring        | Choose between SSH/WMI/SNMP for remote infrastructure monitoring depending on type of server  |
| 6     | Server Health Monitor            | Auto detect server configurations like server name, OS, vendor, #CPU, total memory and disk space configured on the server  |
| 7     | Server Health Monitor            | Visualize resources usage on each server like CPU utilization per cpu, memory usage, free memory, swap memory, network I/O, disk I/O, network latency per interface   |
| 8     | Server Health Monitor            | Visualize per process resources usage on each server like CPU utilization per cpu, memory usage, free memory, swap memory, network I/O, disk I/O, network latency per process   |
| 9     | Server Health Monitor            | Monitor disk usage by file system, partition and also per mount points  |
| 10    | Vmware ESXI Monitor              | Monitor overall resources of Vmware EXSI host like cpu, memory, disk I/O, network I/O   |
| 11    | Vmware ESXI Monitor              | Monitor resources of Vmware EXSI host like cpu, memory, disk I/O, network I/O per process on the EXSI host  |
| 12    | Vmware ESXI Monitor              | Monitor data stores configured and used in the Vmware EXSI host   |
| 13    | Device specific infra monitoring | Monitor device specific common resources like power supply, fan, voltage etc  |
| 14    | Device specific infra monitoring | Monitor device specific infrastructure resources usage using vendors specific MIBS over SNMP  |
| 15    | Cisco Monitor                    | Monitor health of all Cisco devices like router, switches, firewalls, access points etc. Get visibility into cpu, memory, disk I/O, network I/O on each device and also device specific hardware health   |
| 16    | Alerts and Reports               | Alert on any metric on any dimension on any chart, Get Alerts on email, slack, teams etc, auto generate tickets using service now<br>Setup and generate adhoc and scheduled reports on any dashboard. Get CSV report with data to play around in excel format |
| 17    | Customizable Monitors            | For any device which supports SNMP  |

# ENTERPRISE360 – Infrastructure Health Summary

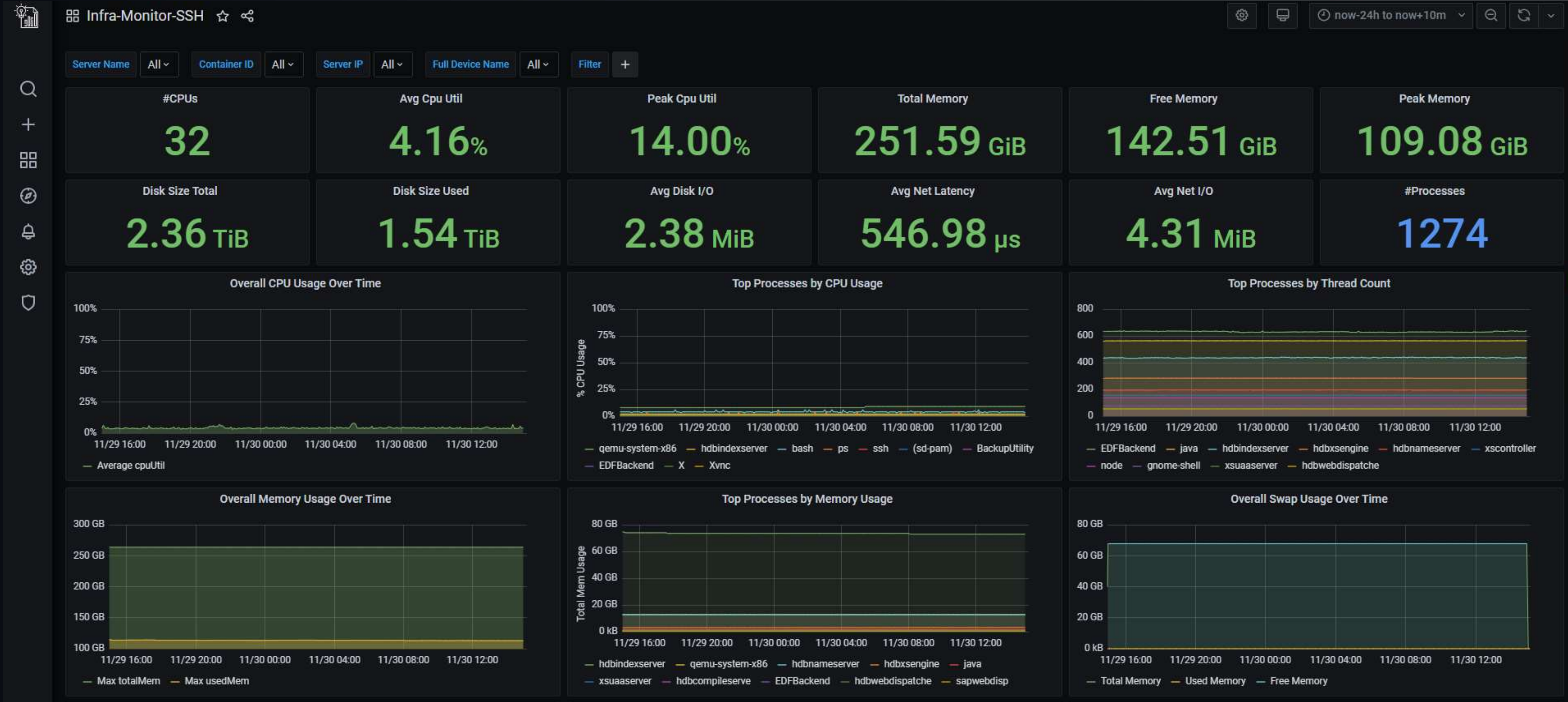


## Use Cases

- Overall view of device health summary in IT network
- Devices UP/Down Status. Devices running into CPU, Mem, Storage, Disk I/O, Network I/O issues
- Device based resource usage alerts



# ENTERPRISE360 – Server Health Monitor



## Use Cases

## Monitor each server health in detail

Resource usage: CPU, memory, storage, disk I/O, network I/O, process level performance & storage monitor

# ENTERPRISE360 – Storage Monitoring



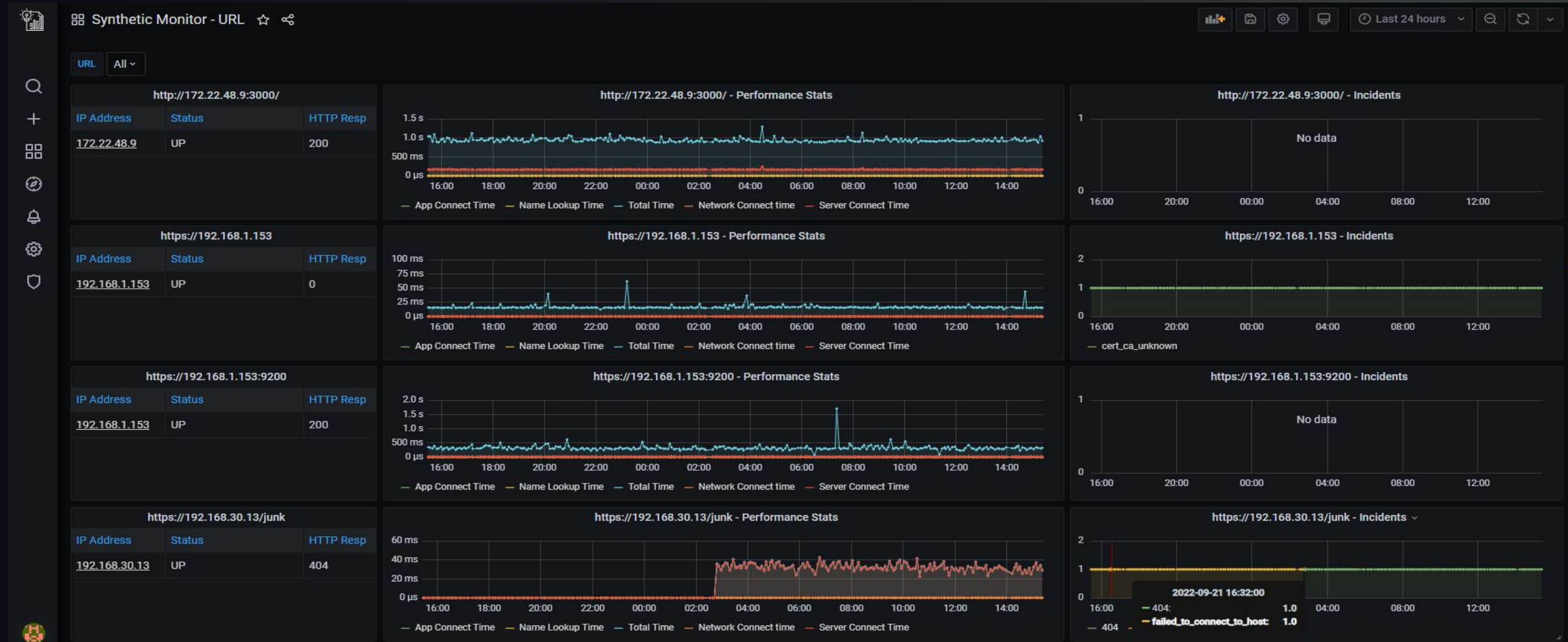
## Use Cases

## Monitor storage on each server

## Get visibility into storage usage on mount points, file systems, partitions



# ENTERPRISE360 – Synthetic Monitor



## Use Cases

## Setup a synthetic test to any web based HTTP/HTTPS url or a rest API

Get performance statistics on your applications generated from real simulated tests from different geo locations

## Get status of the service, connection failures and latency metrics and setup alerts for services

# ENTERPRISE360 – Vmware Exsi Monitor

## Use Cases

## Get real time health and performance of each Esxi host in your IT environment

Get visibility into VMs, allotted resources for each VMs on every Esxi host, Get visibility into usage of VMs on each Esxi host

## Get visibility into resource performance of each VM on the Esxi host



# ENTERPRISE360 – Cisco Monitor

## Use Cases

# Get real time health and performance of each Cisco Device in your IT environment

Get visibility into resource and network performance on each switch, router, firewall, access points etc

## Get visibility into hardware issues on each cisco device

**ENTERPRISE360**

**Network Performance Monitoring(NPM)**

**Workflows**





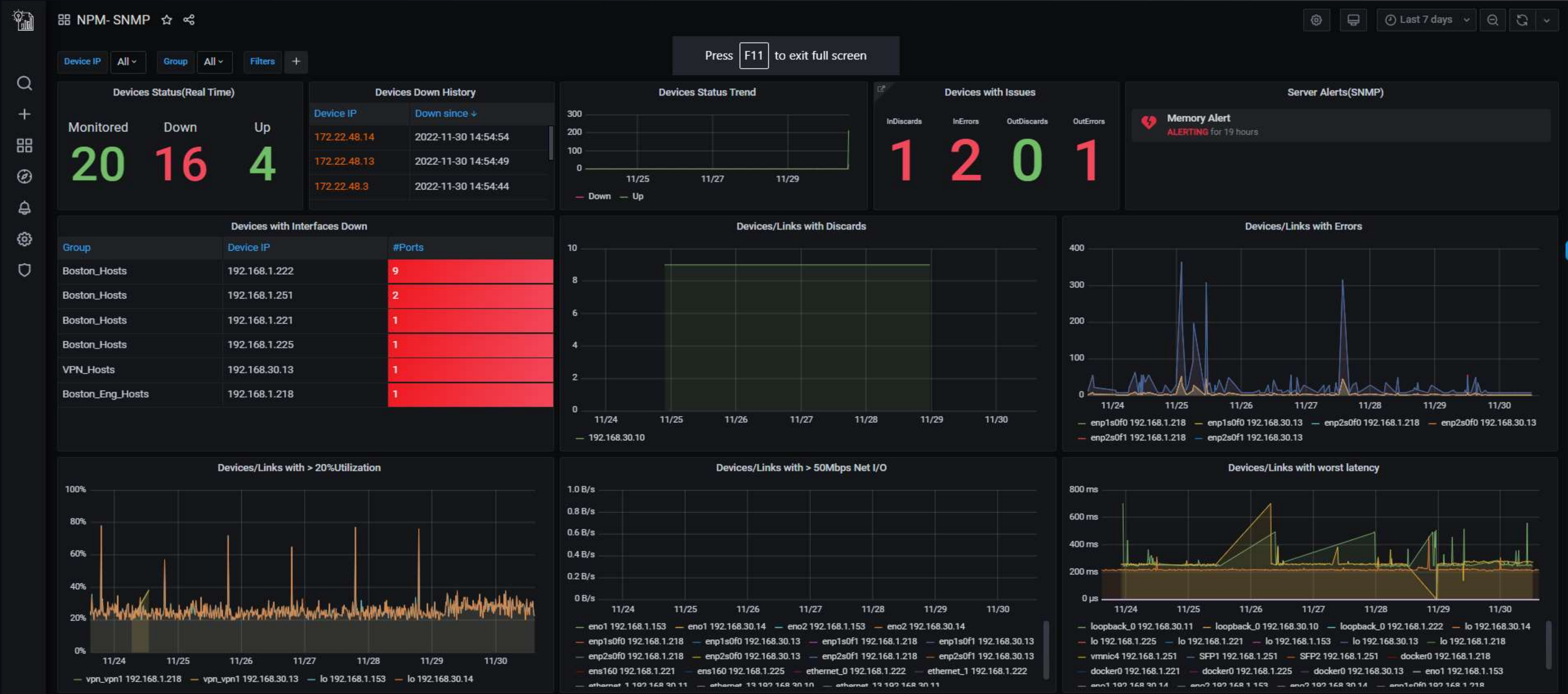
# ThoughtData

## ENTERPRISE360

### NPM Coverage

| SI No | Category               | Requirement/Use Case  |
|-------|------------------------|---|
| 1     | Traffic Monitoring     | Get holistic view of entire network in a single network map visualization   |
| 2     | Traffic Monitoring     | Visualize network traffic per each Router/Switch link - Traffic throughput rate, utilization, pps   |
| 3     | Traffic Monitoring     | Detect and investigate network errors like In/Out retransmissions, In/Out errors, In/Out drops per each Router/Switch link  |
| 4     | Traffic Monitoring     | Detect and investigate TCP related problems like resets, timeouts, zero window etc  |
| 5     | Traffic Monitoring     | Host specific traffic monitoring providing information about all application transactions performed by the host and traffic monitoring specific to the host   |
| 6     | Traffic Monitoring     | Detect and monitor non standard applications running in the network   |
| 7     | Traffic Monitoring     | Define sites and visualize all traffic and application monitoring per site  |
| 8     | Traffic Monitoring     | Trace each network connection at IP flow and application session level and investigate problems, Get packet level evidence  |
| 9     | Traffic Monitoring     | Monitor all VPN and MPLS traffic, detect and troubleshoot problems in VPN/MPLS connections  |
| 10    | Application Monitoring | Visualize network traffic per each application - app specific Traffic throughput rate, utilization, pps per server/site   |
| 11    | Application Monitoring | Detect and investigate application specific problems like HTTP, DNS, SMB, SMTP, SSL Errors etc on all common applications   |
| 12    | Application Monitoring | Investigate application specific problems like HTTP URLs, DNS Queries, SSL transactions etc   |
| 13    | Application Monitoring | Investigate application specific using monitors workflows designed specially for HTTP, DNS, SSL etc   |
| 14    | Application Monitoring | Define a application service comprising of various servers and applications running on them for a collective visualization of the service   |
| 15    | Application Monitoring | Application service level dashboard which can be customized for names of panels and metrics   |
| 16    | Alerts and Reports     | Alert on any metric on any dimension on any chart, Get Alerts on email, slack, teams etc, auto generate tickets using service now etc<br>Setup and generate adhoc and scheduled reports on any dashboard. Get CSV report with data to play around in excel format |

# ENTERPRISE360 – NPM Summary



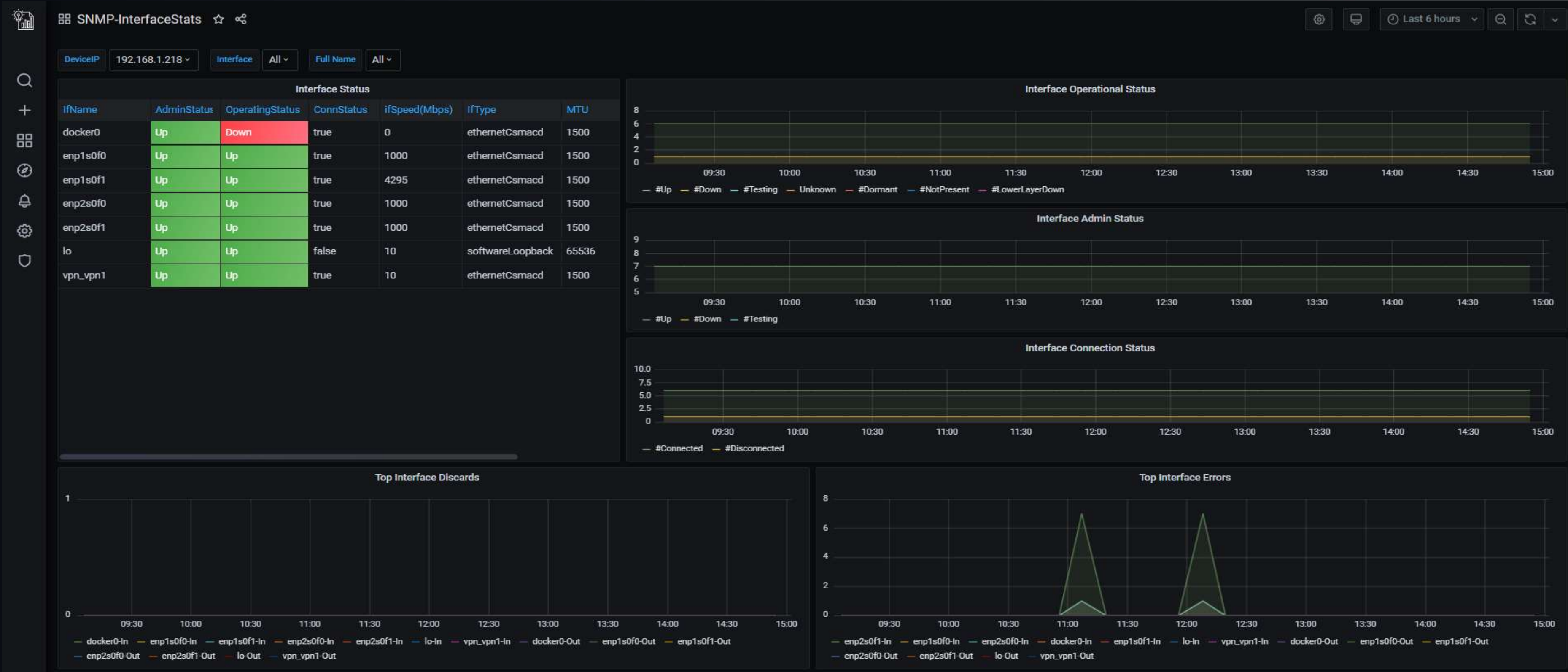
## Use Cases

Overall view of network health across all links across all devices in IT network

Identify links with bandwidth issues, errors and discards, drilldown to investigate each link



# ENTERPRISE360 – Device Network Monitor



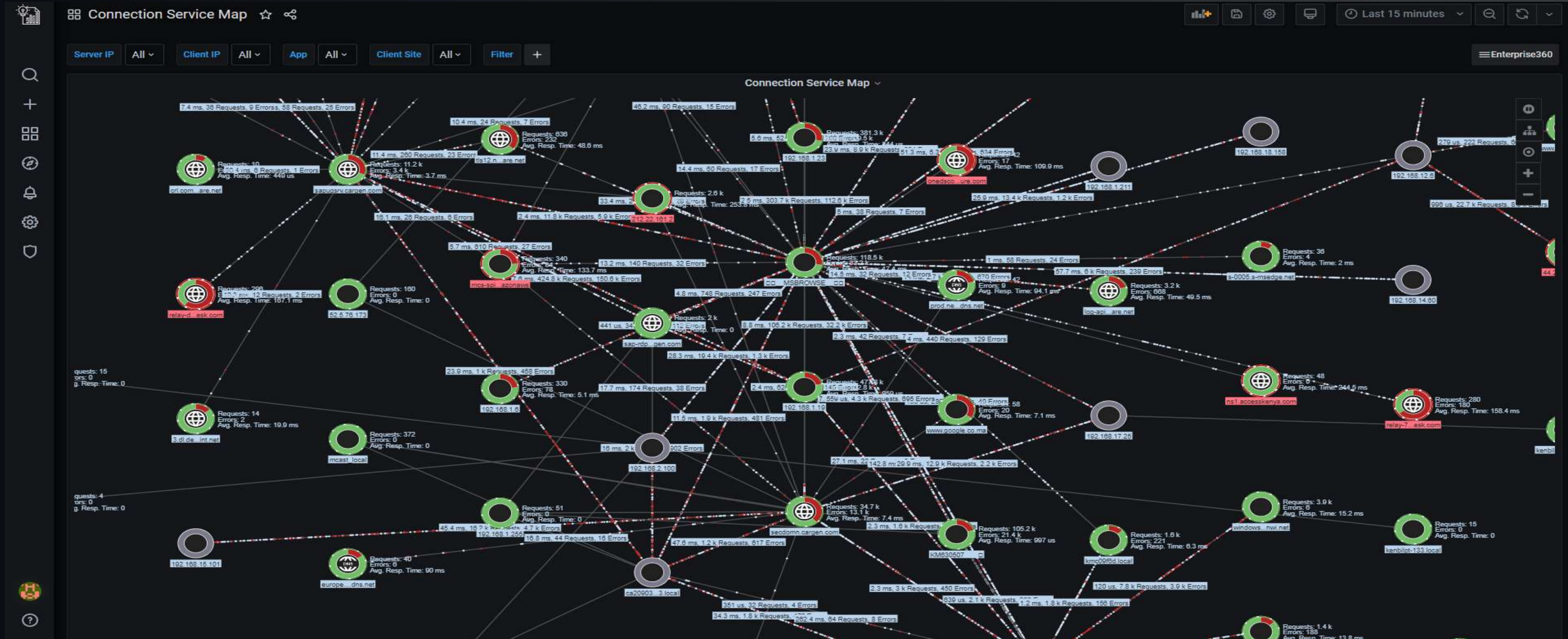
## Use Cases

## Monitor network performance of each router/switch etc per each port/interface

## Interfaces UP/Down Status, traffic statistics, errors, discards



# ENTERPRISE360 – Network Maps



## Use Cases

Overall view of device health summary in IT network

Devices UP/Down Status. Devices running into CPU, Mem, Storage, Disk I/O, Network I/O issues

Device based resource usage alerts



# ENTERPRISE360 – Unknown Apps Monitor



## Use Cases

# Get visibility into all unknown or non standard apps running in your IT network

Investigate non standard ports open, traffic volumes and servers running non standard apps

# ENTERPRISE360 – DNS Monitor



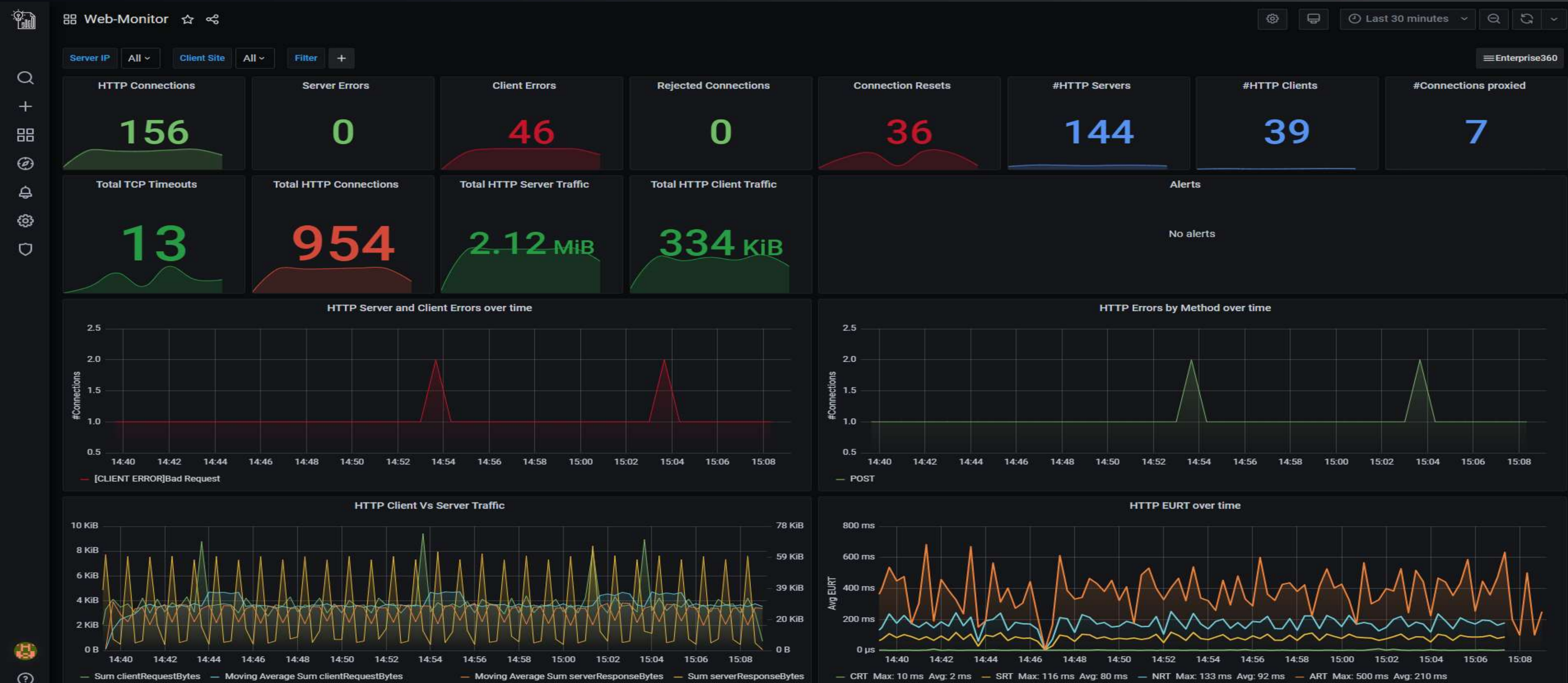
## Use Cases

Detect and investigate all DNS related issues like errors, latency, query load etc

Get visibility to performance of each DNS server or relay, track each DNS transaction performance



# ENTERPRISE360 – Web/HTTP Monitor



## Use Cases

Detect and investigate all HTTP related issues like errors, latency, URL based performance load etc  
Get visibility to performance of each web server or proxy. track each HTTP transaction performance



# ENTERPRISE360 – SSL Monitor



## Use Cases

Detect and investigate all SSL related issues like errors, latency, auth, key, encryption algorithms performance  
Get visibility to performance of each SSL server or proxy. track each SSL transaction performance



**ENTERPRISE360**

**Cyber Threat Monitoring(CTM)  
Workflows**



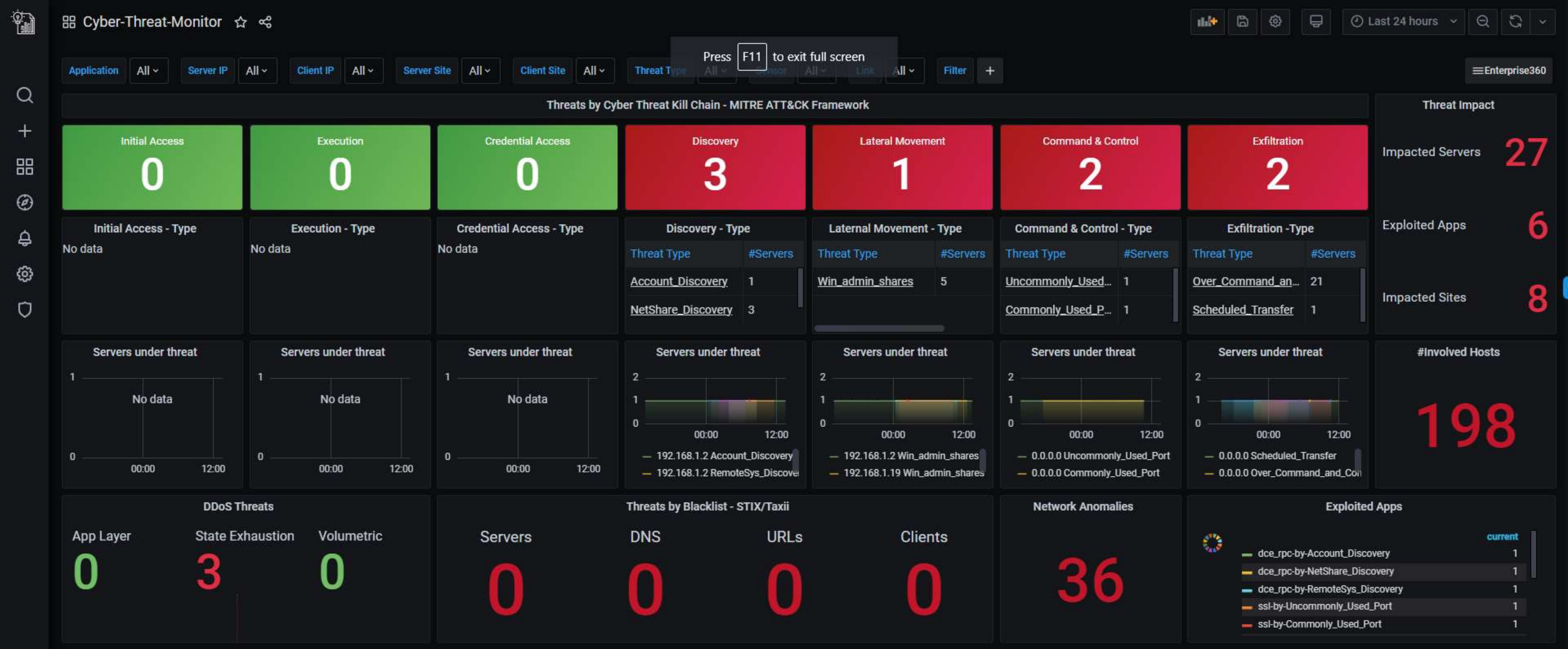
# ThoughtData

## ENTERPRISE360

### CTM Coverage

| SI No | Category                        | Requirement/Use Case  |
|-------|---------------------------------|---|
| 1     | Threat Detection                | Detect and investigate cyber threats in real time in the IT network   |
| 2     | Threat Detection by stage       | Detect and investigate each stage of the threat like initial compromise, discovery, lateral movement, command and control, exfiltration   |
| 3     | Initial Access Threats          | Detect and investigate threats in this category Eg: spearfishing , spam emails etc  |
| 4     | Credential Access Threats       | Detect and investigate threats in this category Eg: hijacking passwords, brute force etc  |
| 5     | Discovery Threats               | Detect and investigate threats in this category Eg: network, app, port discovery etc  |
| 6     | Lateral Movement Threats        | Detect and investigate threats in this category Eg: windows shares, network shares etc  |
| 7     | Command and Control Threats     | Detect and investigate threats in this category Eg: uncommon SSL connections, external to internal SSL connections etc  |
| 8     | Exfiltration Threats            | Detect and investigate threats in this category Eg: internal to external unusual data movements, periodic data movements, scheduled data movements etc  |
| 9     | Threat Knowledge Base           | Know more details about the threat by a threat knowledgebase linked to each detected threat   |
| 10    | Threat Investigation            | Investigate threats in detail to understand the impact of threats, servers, hosts and apps on which threat is running and also source of origination of the threat  |
| 11    | Threat Evidence                 | Get evidence of the threats like sample network traffic trace or server logs to confidently take actions on the threats   |
| 12    | DDOS threats                    | Detect and investigate DDoS threats like amplification, state exhaustion and application layer attacks and perform full investigation to understand source and impact of the attack on applications and users   |
| 13    | Reputation threats              | Track every network connection inbound our outbound which is going to or coming from a known malicious source like bad reputation DNS hosts, website URLs or Public server IPs and immediately flag the threat and also get details of associated threats with the source |
| 14    | Threat Intelligence Integration | Integration with popular threat intelligence feeds and use the feed for threat detection in the IT network  |
| 15    | Certificate Threats             | Detect and investigate SSL certificates related threats like untrusted, self signed and expired certificates on web servers in the IT network   |

# ENTERPRISE360 – Cyber Threat Monitor

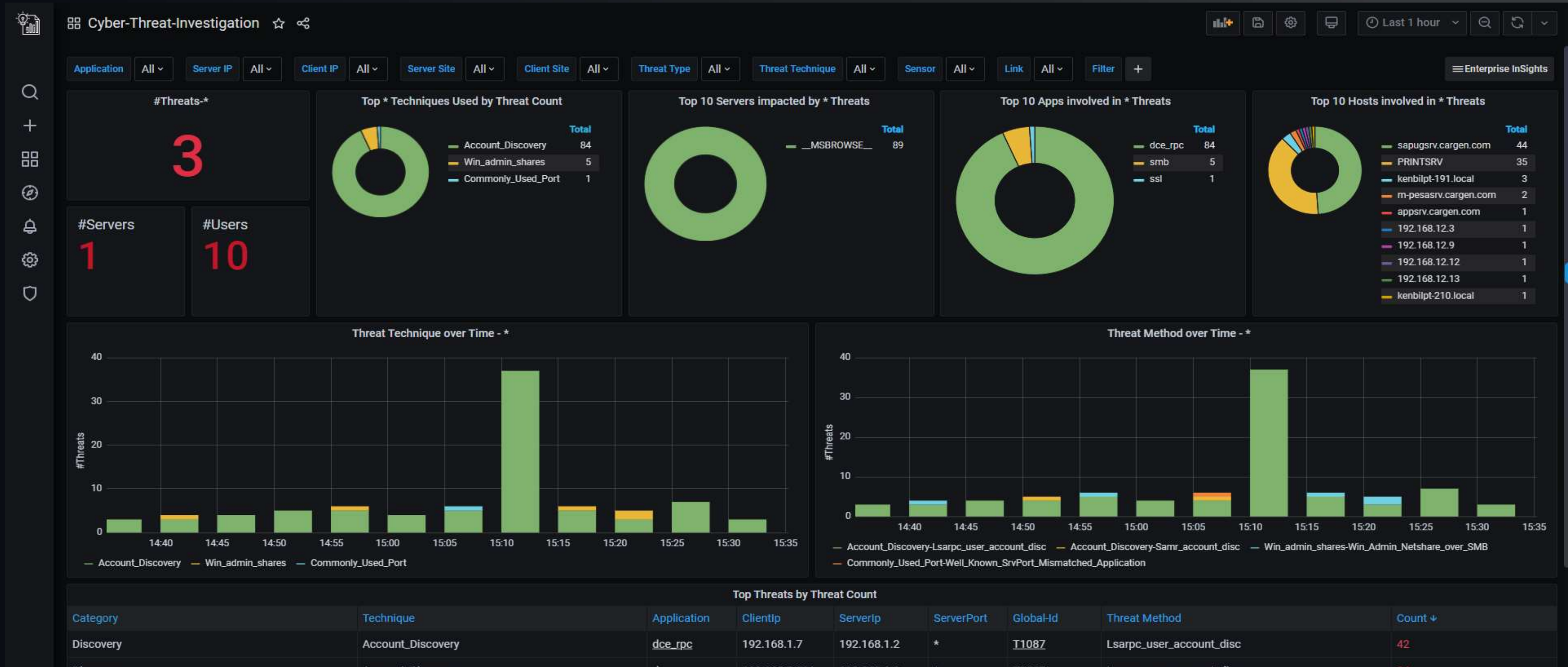


## Use Cases

- Real time visibility into cyber threats and attacks
- MITRE ATT&CK Threats, DDoS Threats, Reputation Threats, Network anomalies
- Drilldown into deep threat investigation to assess impact with evidence



# ENTERPRISE360 – Cyber Threat Investigation



# Use Cases

Investigate all cyber threats, threat impact, apps, nodes, servers involved

Drilldown further to get visibility into each threat investigate further to get evidence using network traffic



## **ENTERPRISE360**

Single solution for all your IT monitoring needs

**See it in action ! Sign up for demo today !**

**[Demo Signup](#)**